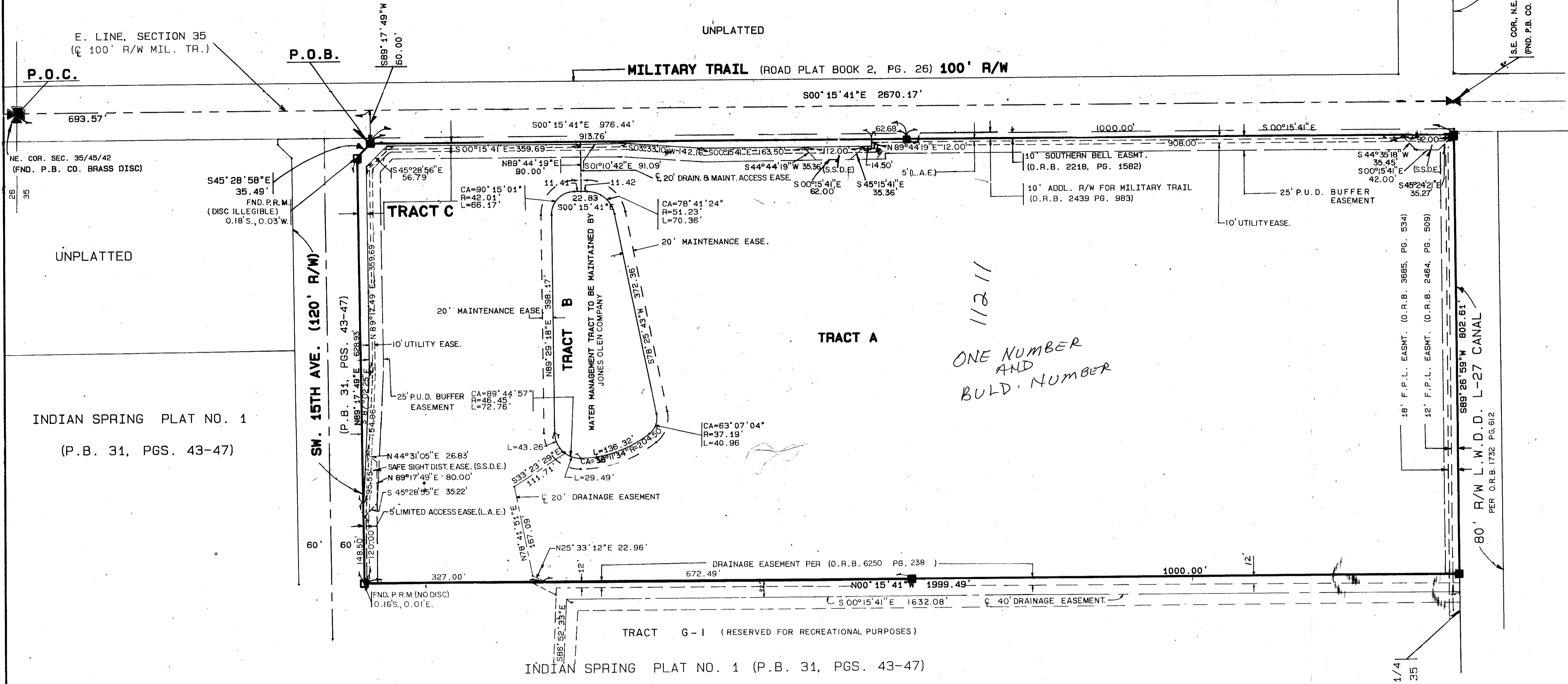


# INDIAN SPRING PARCEL EIGHT

A PART OF INDIAN SPRING P.U.D.  
SITUATE IN SECTIONS 35, TOWNSHIP 45 SOUTH, RANGE 42 EAST  
PALM BEACH COUNTY, FLORIDA

JANUARY ,1990

SHEET 2 OF 2



STATE OF FLORIDA  
COUNTY OF PALM BEACH

THIS PLAT WAS FILED FOR RECORD  
THIS \_\_\_\_\_ DAY OF \_\_\_\_\_  
AD, 1990 AND DULY RECORDED  
IN PLAT BOOK \_\_\_\_\_ ON PAGES  
\_\_\_\_\_ AND \_\_\_\_\_

JOHN B. DUNKLE, CLERK  
BY: \_\_\_\_\_, D.C.

CIRCUIT COURT SEAL

SUBDIVISION # INDIAN SPRING PARCEL EIGHT  
PAGE 67  
BOOK 65  
SECTION 35  
TAP 458

*Pet. 173-52  
Allocation # 0001*

*35 Rental  
Apt. Bldgs  
w/ 12 Carports  
5-31-90*

0259-013

65/67

<b>STANLEY CONSULTANTS OF FLORIDA, INC.</b>		ENGINEERS • PLANNERS • SURVEYORS 2000 LOMBARD STREET, WEST PALM BEACH, FL 33407 (407) 842-7444	
DRAWN	D.L.S.	DATE	OCT. 1989
CHECKED	S.T.K.	SCALE	1" = 10'
DRAWING NO.	D-12 10089	INDIAN SPRING PARCEL EIGHT PART OF INDIAN SPRING P.U.D.	